



Fireside Discussion: Diabetes and the Factors Driving Innovation

January 7, 2026

AT278 – an insulin to transform the next generation of AID delivery systems



The only insulin that can enable pump use for high insulin users and catalyse next generation of longer wear smaller AID systems



AT278: The first ultra-concentrated (500U/mL) AND ultra-rapid acting insulin



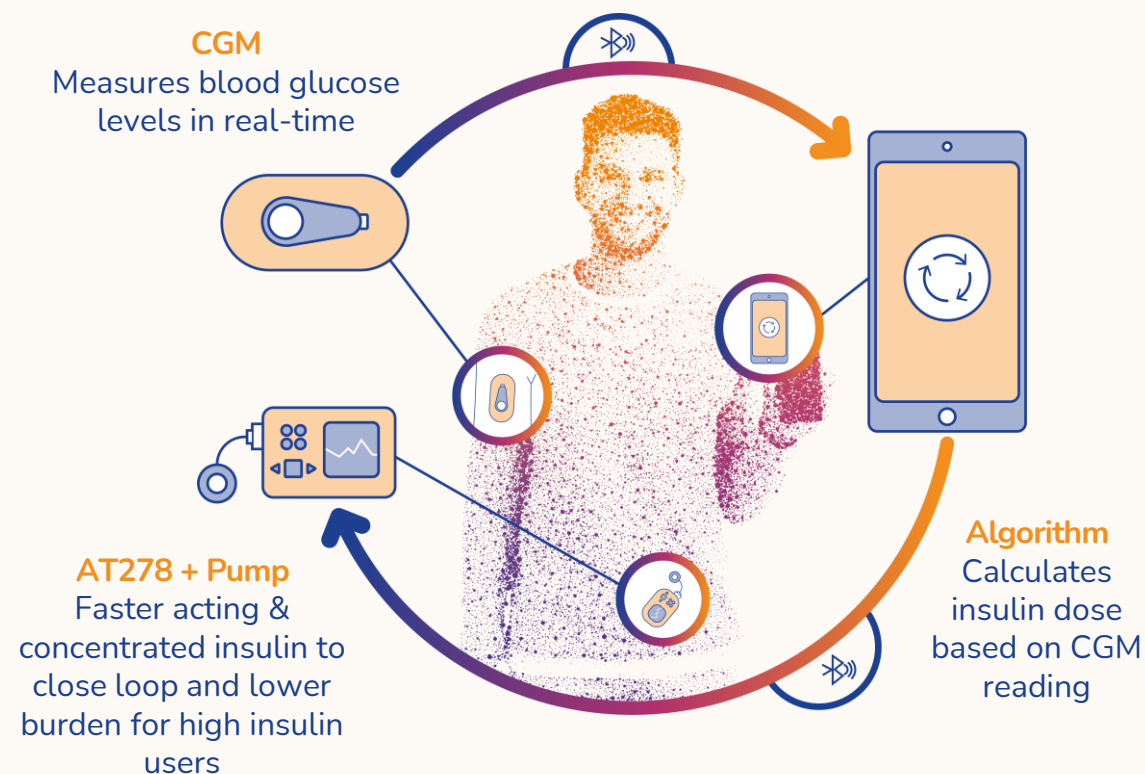
Superior PK/PD profile, compared with 100U/mL (NovoLog®) and 500U/mL (Humulin-R U500)



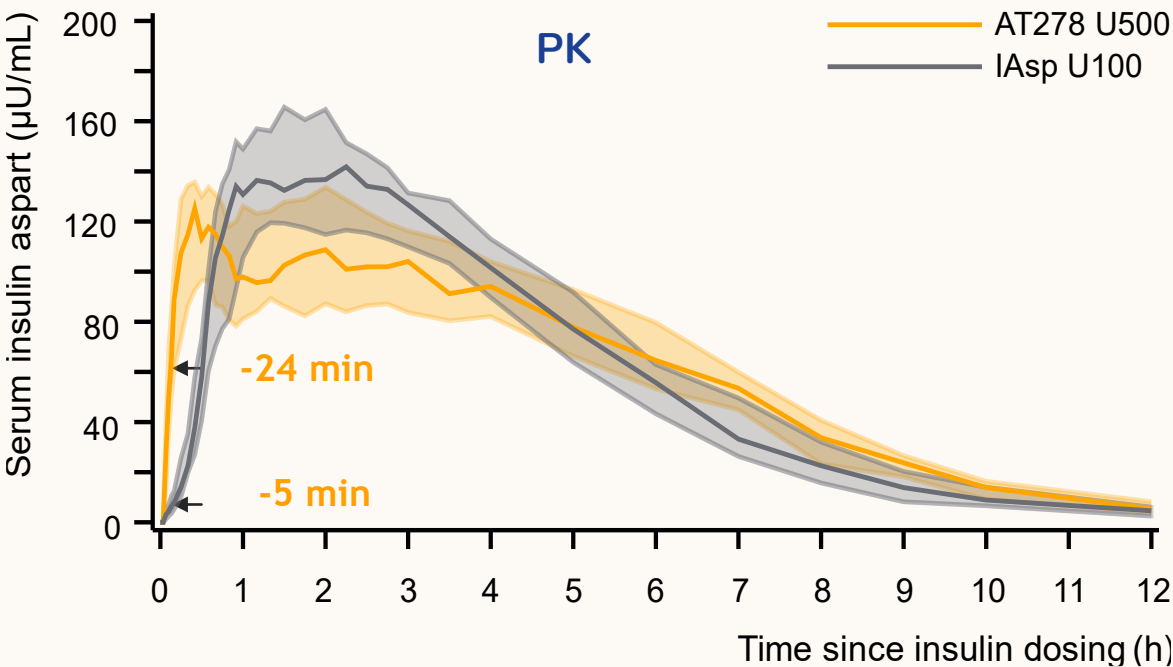
Only insulin of its type, to drive broader AID adoption, particularly for higher insulin users



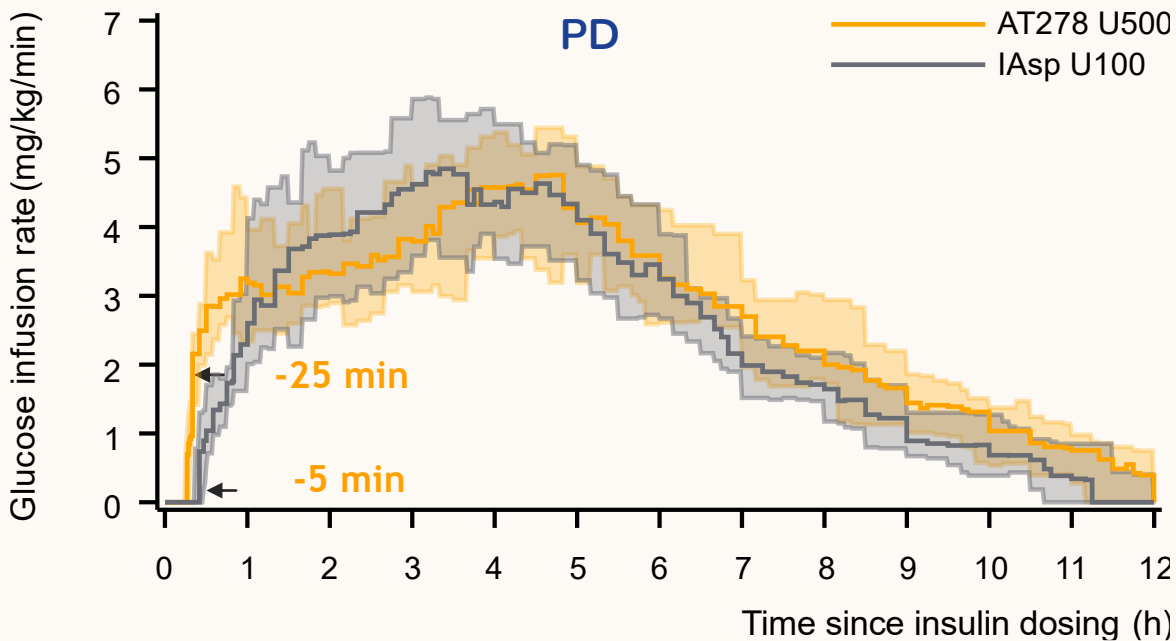
Opportunity to disrupt the market with longer wear (Type 1 and 2) + miniaturisation of AID



AT278 demonstrated superior PK/PD compared with NovoRapid® in T2D patients with high BMI



Insulin exposure ($\mu\text{U}\cdot\text{min/mL}$)	Treatment ratio (95% CI) AT278 U500 vs. IAsp U100
$\text{AUC}_{\text{Insulin},0-1\text{h}}$	1.48 (1.28; 1.71)
$\text{AUC}_{\text{Insulin},0-2\text{h}}$	0.98 (0.88; 1.08)
$\text{AUC}_{\text{Insulin},0-12\text{h}}$	0.97 (0.93; 1.00)

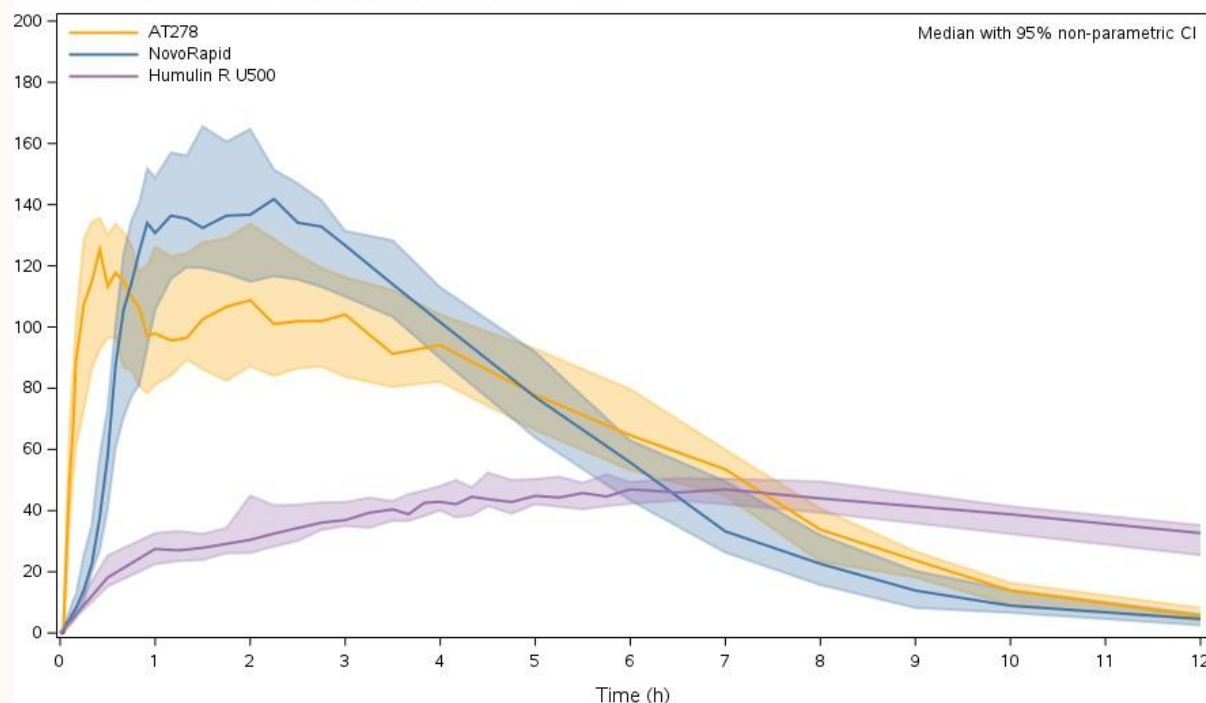


Glucose lowering effect (mg/kg)	Treatment ratio (95% CI) AT278 U500 vs. IAsp U100
$\text{AUC}_{\text{GIR},0-1\text{h}}$	1.66 (1.32; 2.96)
$\text{AUC}_{\text{GIR},0-2\text{h}}$	1.19 (1.02; 1.39)
$\text{AUC}_{\text{GIR},0-12\text{h}}$	1.06 (0.97; 1.16)

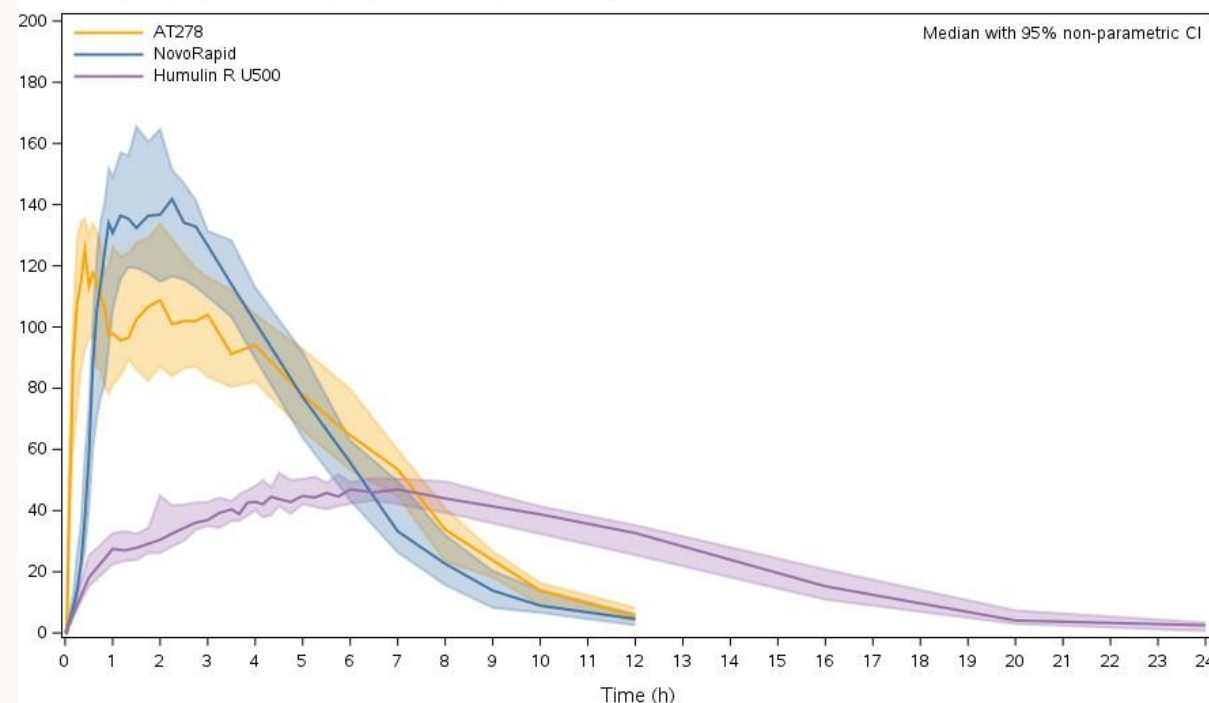
AT278 (500U/mL) demonstrated PK superiority compared with NovoRapid® (100U/mL) & Humulin-R U500 in T2D patients with high BMI



Baseline Corrected Serum Insulin Aspart and Human Insulin (uIU/mL)



Baseline Corrected Serum Insulin Aspart and Human Insulin (uIU/mL)



twiist™ is poised to disrupt the AID system market



• Simplified Access

- Available via pharmacy channel at lowest net cost to payers
- Simple, all-in-one starter kit and monthly refill kits

• Personalized Control

- Compact, lightweight design with flexible wear options
- Smallest form factor with highest insulin capacity (300-unit) in the U.S.
- twiist Loop algorithm has widest target glucose range (87-180 mg/dL)

• Advanced Technology

- Powered by first new drug delivery technology in 25 years
- Modern device architecture that can accelerate pace of innovation
- Transparent algorithm with proven outcomes
- Smartphone control, including bolusing from Apple Watch integration

The twiist system is now commercially available for people ages 6 and up with type 1 diabetes in the United States



Thank you

For more information about Arecor Therapeutics plc, please visit the website at www.arecor.com

Tel +44 1223 426 060
info@arecor.com

For more information about Sequel Med Tech and twiist, please visit the websites at www.sequelmedtech.com and www.twiist.com

Tel: +1 888-673-7835
Tel: +1-877-4twiist